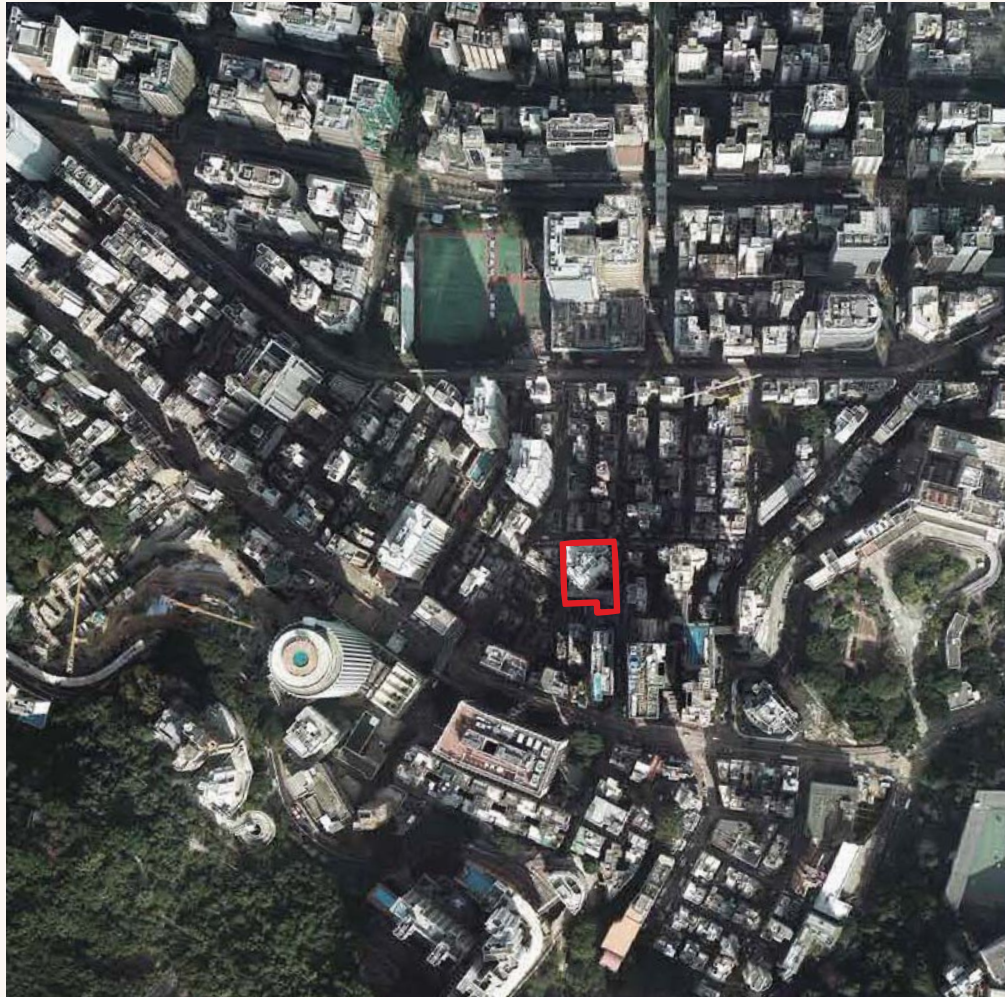


AERIAL PHOTOGRAPH OF PHASE 1 OF THE DEVELOPMENT  
發展項目第一期的鳥瞰照片




Survey and Mapping Office, Lands Department, The Government of HKSAR ©  
Copyright reserved – reproduction by permission only

香港特別行政區政府地政總署測繪處 © 版權所有，未經許可，不得翻印

Adopted from part of the aerial photo taken by the Survey and Mapping Office  
of Lands Department at a flying height of 6000 feet, photo No. CS62354, dated  
1/1/2016.

摘錄自地政總署測繪處於2016年1月1日在6000呎飛行高度拍攝之鳥瞰照片，編號為  
CS62354。

 Phase 1 of the Development  
發展項目第一期

Remark 備註:

Due to technical reason that the boundary of the Phase 1 of the Development is irregular, the Aerial Photograph has shown area more than that required under the Residential Properties (First-hand Sales) Ordinance.

因發展項目第一期的邊界不規則的技術原因，鳥瞰照片所顯示之範圍多於《一手住宅物業銷售條例》所要求的範圍。