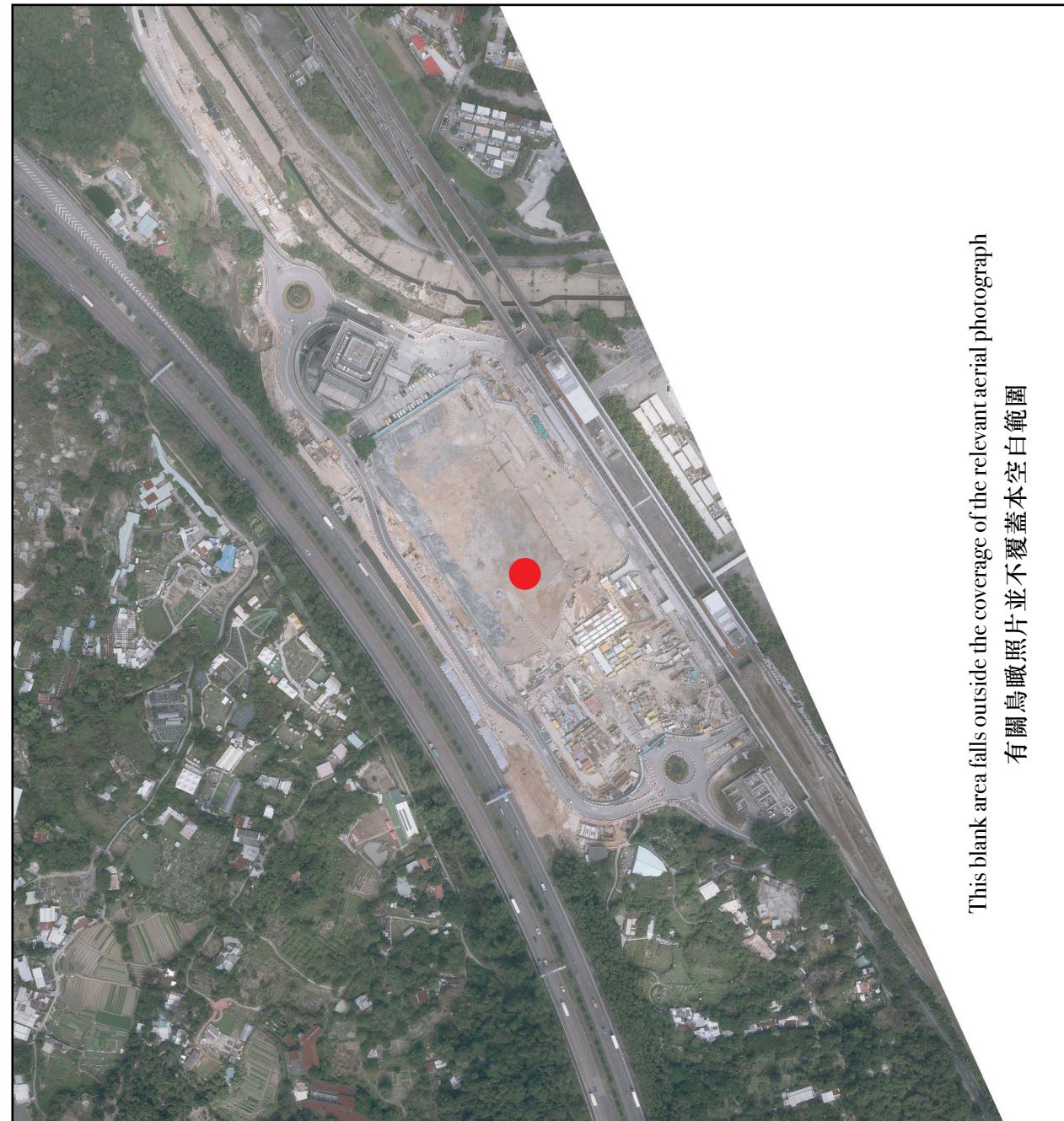


# AERIAL PHOTOGRAPH OF THE PHASE 期數的鳥瞰照片



This blank area falls outside the coverage of the relevant aerial photograph  
有關鳥瞰照片並不覆蓋本空白範圍

● Location of the Phase  
期數的位置



The Aerial Photograph is adopted from part of the aerial photograph taken by the Survey and Mapping Office of the Lands Department at a flying height of 3,000 feet, photo No. E148375C dated 14 February 2022.

鳥瞰照片摘錄自地政總署測繪處於2022年2月14日在3,000呎飛行高度拍攝，編號為E148375C之鳥瞰照片。

Survey and Mapping Office, Lands Department, The Government of HKSAR © Copyright reserved - reproduction by permission only.

香港特別行政區政府地政總署測繪處 © 版權所有，未經許可，不得複製。

The Aerial Photograph is provided by the Hong Kong GeoData Store and intellectual property rights are owned by the Government of the HKSAR.

鳥瞰照片由香港地理數據站提供，香港特別行政區政府為知識產權擁有人。

Notes :

1. Copy of the Aerial Photograph of the Phase is available for free inspection at the sales office of the Phase during opening hours.
2. Due to technical reasons (such as the shape of the Phase), the Aerial Photograph may show more area than that required under the Residential Properties (First-hand Sales) Ordinance (Cap.621).
3. The Vendor advises prospective purchasers to conduct on-site visit for a better understanding of the Phase, its surrounding environment and the public facilities nearby.

附註：

1. 期數的鳥瞰照片之副本可於期數的售樓處開放時間內免費查閱。
2. 因技術原因(例如期數之形狀)，鳥瞰照片所顯示之範圍可能多於《一手住宅物業銷售條例》(第621章)所要求。
3. 賣方建議準買家到有關期數地盤作實地考察，以對該期數、其周邊地區環境及附近的公共設施有較佳了解。



# AERIAL PHOTOGRAPH OF THE PHASE 期數的鳥瞰照片



This blank area falls outside the coverage of the relevant aerial photograph  
有關鳥瞰照片並不覆蓋本空白範圍

● Location of the Phase  
期數的位置



The Aerial Photograph is adopted from part of the aerial photograph taken by the Survey and Mapping Office of the Lands Department at a flying height of 3,000 feet, photo No. E148373C dated 14 February 2022.

鳥瞰照片摘錄自地政總署測繪處於2022年2月14日在3,000呎飛行高度拍攝，編號為E148373C之鳥瞰照片。

Survey and Mapping Office, Lands Department, The Government of HKSAR © Copyright reserved - reproduction by permission only.

香港特別行政區政府地政總署測繪處 © 版權所有，未經許可，不得複製。

The Aerial Photograph is provided by the Hong Kong GeoData Store and intellectual property rights are owned by the Government of the HKSAR.

鳥瞰照片由香港地理數據站提供，香港特別行政區政府為知識產權擁有人。

Notes :

1. Copy of the Aerial Photograph of the Phase is available for free inspection at the sales office of the Phase during opening hours.
2. Due to technical reasons (such as the shape of the Phase), the Aerial Photograph may show more area than that required under the Residential Properties (First-hand Sales) Ordinance (Cap.621).
3. The Vendor advises prospective purchasers to conduct on-site visit for a better understanding of the Phase, its surrounding environment and the public facilities nearby.

附註：

1. 期數的鳥瞰照片之副本可於期數的售樓處開放時間內免費查閱。
2. 因技術原因(例如期數之形狀)，鳥瞰照片所顯示之範圍可能多於《一手住宅物業銷售條例》(第621章)所要求。
3. 賣方建議準買家到有關期數地盤作實地考察，以對該期數、其周邊地區環境及附近的公共設施有較佳了解。