

Aerial Photograph of the Phase of the Development 發展項目期數的鳥瞰照片

This blank area falls outside the coverage of this aerial photo
鳥瞰照片並不覆蓋本空白範圍




S南



Adopted from part of the aerial photograph taken by the Survey and Mapping Office of Lands Department at a flying height 6900 feet, photo No. E065829C , dated 27/9/2019.

摘錄自地政總署測繪處於2019年9月27日在6900呎飛行高度拍攝之鳥瞰照片,編號為E065829C。

 Location of the Phase of the Development
發展項目期數的位置

Survey and Mapping Office, Lands Department, The Government of HKSAR © Copyright reserved - reproduction by permission only.

香港特別行政區政府地政總署測繪處©版權所有,未經許可,不得複製。

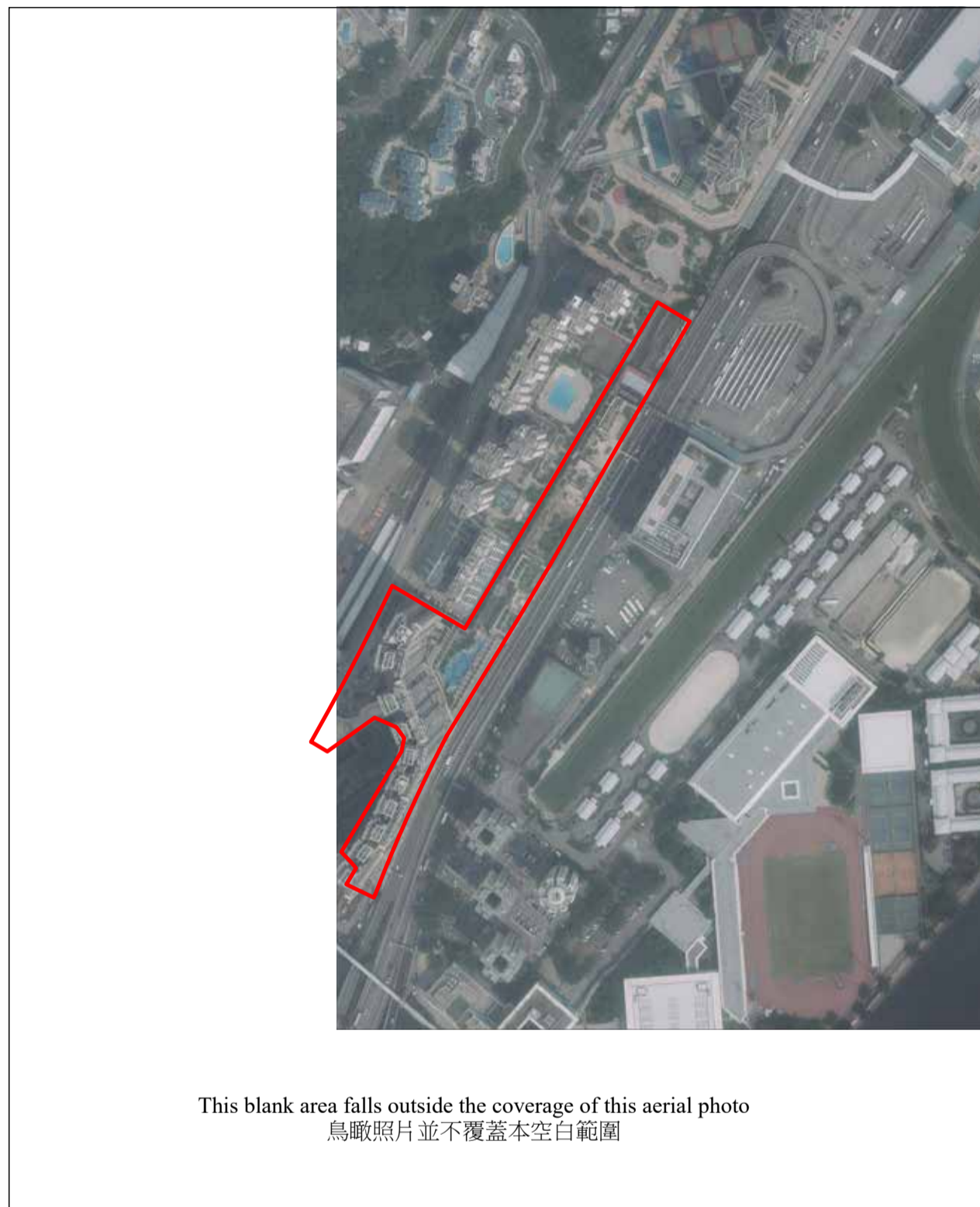
Notes :

1. The aerial photograph may show more than the area required under the “Residential Properties (First-hand Sales) Ordinance” due to the technical reason that the boundary of the Development is irregular.

附註:

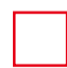
1. 由於發展項目的邊界不規則的技術原因,上述鳥瞰照片可能顯示多於「一手住宅物業銷售條例」所要求顯示的範圍。

Aerial Photograph of the Phase of the Development 發展項目期數的鳥瞰照片



Adopted from part of the aerial photograph taken by the Survey and Mapping Office of Lands Department at a flying height 6900 feet, photo No. E066153C, dated 27/9/2019.

摘錄自地政總署測繪處於2019年9月27日在6900呎飛行高度拍攝之鳥瞰照片,編號為E066153C。

 Location of the Phase of the Development
發展項目期數的位置

Survey and Mapping Office, Lands Department, The Government of HKSAR © Copyright reserved - reproduction by permission only.

香港特別行政區政府地政總署測繪處©版權所有,未經許可,不得複製。

Notes :

1. The aerial photograph may show more than the area required under the “Residential Properties (First-hand Sales) Ordinance” due to the technical reason that the boundary of the Development is irregular.

附註:

1. 由於發展項目的邊界不規則的技術原因,上述鳥瞰照片可能顯示多於「一手住宅物業銷售條例」所要求顯示的範圍。